

Storm Risk Management in Parks

Jill Lawlor, District of West Vancouver

Neal Aven, City of Surrey

Tristan James, MIABC

Satvinder Sekhon, MIABC





Why we are here. . .

Vancouver's Stanley Park seawall closed due to dangerous conditions

People should avoid the area.



Elana Shepert
Oct 21, 2024 11:14 AM



1 / 2 The Stanley Park seawall is closed on Monday, Oct. 21 following a major storm. However, the Vancouver weather forecast does not include more torrential rain. | Photo: Margarita-Young/Stock Editorial/Getty Images Plus



City of Vancouver

CAMPING FINALLY REOPENS

Camping at B.C.'s most popular park to reopen after heavy storm damage

Alanna Kelly / Glacier Media - Mar 11, 2025 / 3:27 pm



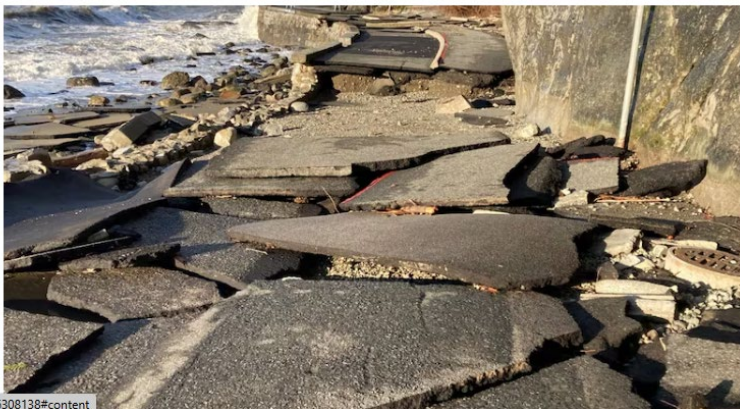
Photo: Alanna Kelly

British Columbia's most popular park will soon be open for camping again after a 2024 storm heavily damaged it.

Vancouver seawall damaged as high tides, winds pummel B.C.'s South Coast

Jericho Park Pier damaged, Ambleside Park partially flooded

CBC News · Posted: Jan 07, 2022 6:10 PM PST | Last Updated: January 7, 2022



y-1.6308138#content



Large trees covered a primary path (Annie Clark's Way) at Neck Point Park on the afternoon of Wednesday, Nov. 20, (Ian Holmes/NanaimoNewsNOW)

PARKS IMPACTED

By Ian Holmes

Brisk storm topples trees at Nanaimo parks, including prized fairy tree at Neck Point

Nov 21, 2024 | 5:33 AM



B.C.'s popular Juan de Fuca Trail closed all summer due to 'extensive' storm damage.



Sasquatch Park, November 2021



Othello Tunnels – Nov 2021



Allouette Valley Trail – Nov 2021



West Vancouver Sea Walk – 2022



Chittenden Pre & Post Atmospheric River

Current Storm Practices

- City of North Vancouver – Close parks at 90 km
- West Vancouver – Close seawalk during king tide – and wind; keep parks open
- City of Nanaimo – No closures
- City of Surrey – Signage no closure





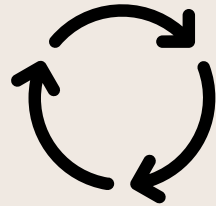


Risk Management

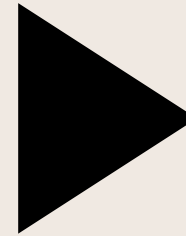
Risk Assessment



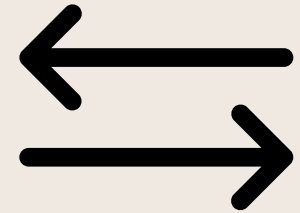
Are the
known risks?



Operational
Practice /
Policy



What are the
triggers for
action?



Has anything
changed?

Then What?

Mitigation strategies

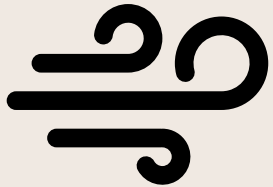
What is “reasonable”

The Role of Signage

Organizational Risk Tolerance



Mitigation Strategies



Monitor weather
– consider
triggers for
action



Close park – is
that an option?



Communication
to users



Review what is
in place

The Role of Signage

Warning park users about known or emerging hazards

Support operational decisions

Reducing liability

Providing consistent public messaging









CITY OF SURREY

CAUTION

**YOU ARE ENTERING A FOREST
WITH AREAS INFECTED WITH
LAMINATED ROOT ROT**

**PLEASE BE ADVISED THAT TREES
INFECTED BY LAMINATED ROOT ROT
CAN UPROOT AND FALL DURING
MODERATE WINDS**

**PARK USERS MUST EXERCISE
CAUTION AND AVOID ENTERING
FOREST AREAS DURING WIND EVENTS**

QUESTIONS? CALL 604-501-5050

COTTONWOOD LAKE

REGIONAL PARK

Regional Park Service: Nelson, Salmo, Area E, Area F, Area G



Day Use Area
Leave No Trace



Dogs on Leash
At All Times



**Fires in Designated
Areas Only**
No Cutting Vegetation



No Camping



No Dumping



No Motorized Vehicles



Emergency Call 911



4224 Highway 6

Please do not enter the dangerous area beyond this gate! You quite possibly will get hurt, then you will sue, then a protracted court battle will ensue exhausting your financial resources and you will lose because this sign that warned you will be

"Exhibit 1".

Balance



What are we responsible for?

Public Safety

Levels of Service



Who has a **policy** and what makes a good one?

Why have a policy?

What does the policy look like?

How to create the policy?

What do you do with the policy?



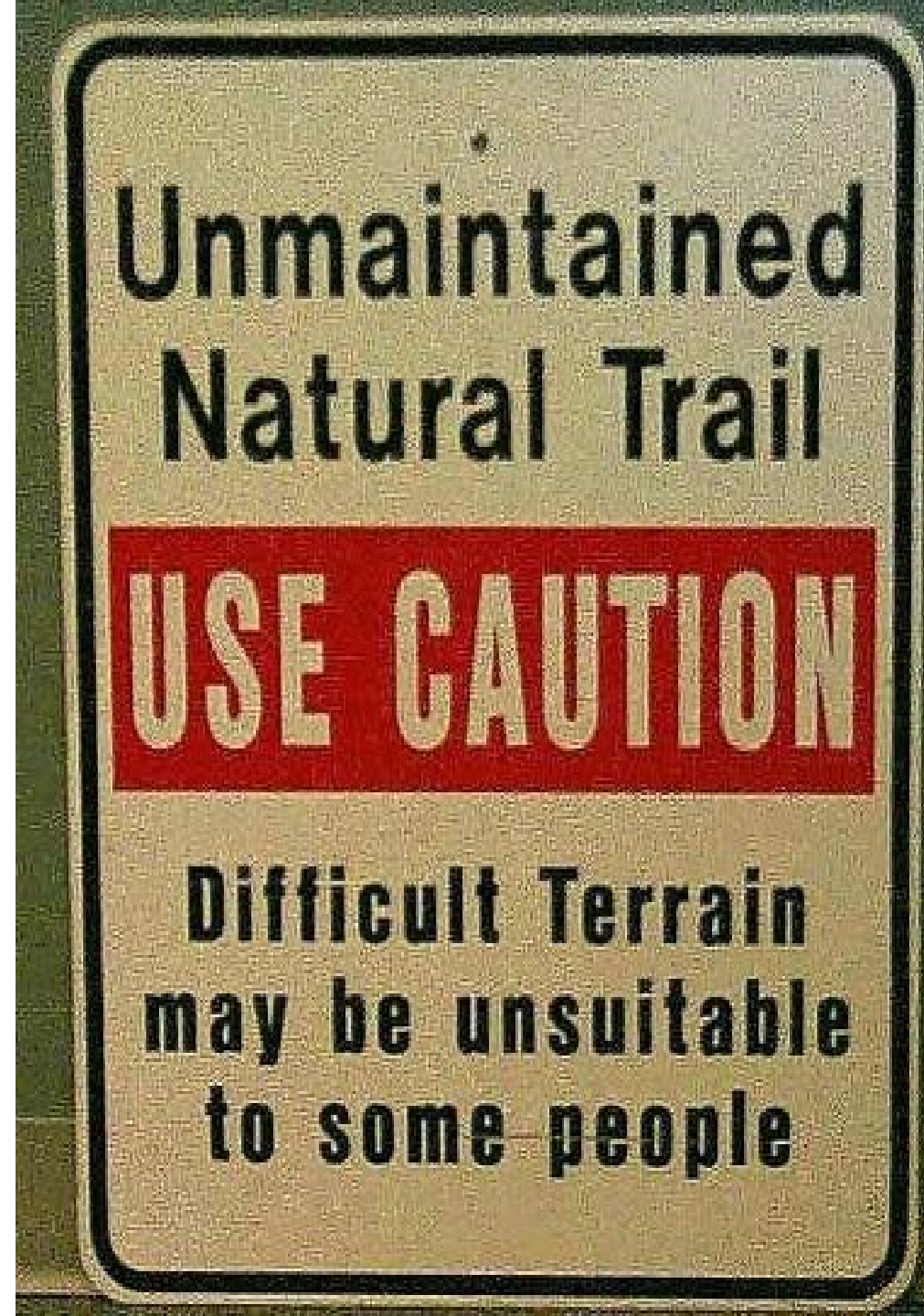
Legal perspective

Negligence & Nuisance claims in the context of natural hazards

Local Government Act, sections 639 and 744

Claims examples

Practical considerations



Discussion:

When to close a park?

What is reasonable to achieve?

What is a defensible process?



Danger tree awareness bulletin

Typical winter windstorm*

- 80% black cottonwood
- 10% red alder
- 5% big leaf maple
- 5% other

*City of Surrey

When on a work site, workers have a duty to be aware of potential hazards and take precautions against them.

Potential hazards on a work site include trees. When completing your work zone assessment prior to starting work, be aware of potential conditions that can make trees dangerous, including:



The no-work zone around a dangerous tree is two times the height of the tree. If you notice a dangerous tree where you are working, leave the no-work zone and contact Urban Forestry through **604-501-5050**, **parks@surrey.ca** or the **MySurrey App**.

Weather conditions can make trees more dangerous. If high winds or heavy snow are causing branches to fall into your work zone, leave the area.

If the tree is close to power lines call BC Hydro at: 1-800-224-9376 or *HYDRO (49376)

Storm response plan

WINDSTORM RESPONSE PLAN

Table of Contents

1.0 INTRODUCTION	page
1.1 Scope	3
1.2 Purpose	3
1.3 Objective	3
1.4 Definitions and Terminology	3
1.5 Response Organization	3
1.6 Incident command Post	4
2.0 RESPONSE GUIDELINES	
2.1 Goals	4
2.2 Activation	4
2.3 Level of Response Activation	4
2.4 Termination	5
2.5 Procedures	5
2.6 Readiness	5
2.7 Response Implementation	5
2.8 Designation of Alternates	5
2.9 Protection of Records	6
2.10 Storm Response Group	6
APPENDIX A: Responding to Requests and Reports of Tree Hazards during Wind Storm Events	8
APPENDIX B: Tree Failure to Private Property Standing Operating Procedures	9
APPENDIX C: Parks and Engineering Tree Failure Responsibilities	10
APPENDIX D: PARKS Section Tree Failure Responsibilities	11

2.0 RESPONSE GUIDELINES

2.1 Goals

The response goals include as follows:

1. Provide for the safety and health of all responders
2. Save lives
3. Protect public health
4. Protect City infrastructure
5. Protect property
6. Protect the environment
7. Reduce economic and social losses.

2.2 Activation

The following people are delegated authority to implement the response in whole or in part:

- Parks Manager
- Parks Section Manager
- Parks Operation Coordinator, Natural Areas
- Parks Operation Coordinator, Arboriculture

The response will be activated when the number of expected tree failures warrants coordination of response efforts. This usually occurs when sustained wind speed exceeds 80 kilometer per hour and/or reports of tree failures and potential tree failures exceed fifteen per day.

Storm response plan

Pre-season Storm Response Plan Meeting Agenda

Storm Categories

Roles and responsibilities

- ▶ Preparation (pre-season)
- ▶ Implementation (storm season)

Storm Response

- ▶ Level of response
- ▶ Crews and equipment
- ▶ Prioritizing work

Standard Operating Procedures

Questions?



Storm response plan

Minor Storms

Hazardous trees and parts will be dealt with within 5 working days of the storm event

Clean-up may take longer

NA and ST operate independently (staff resources may be shared)

Major Storms

It will take longer than 5 working days to address hazardous situations

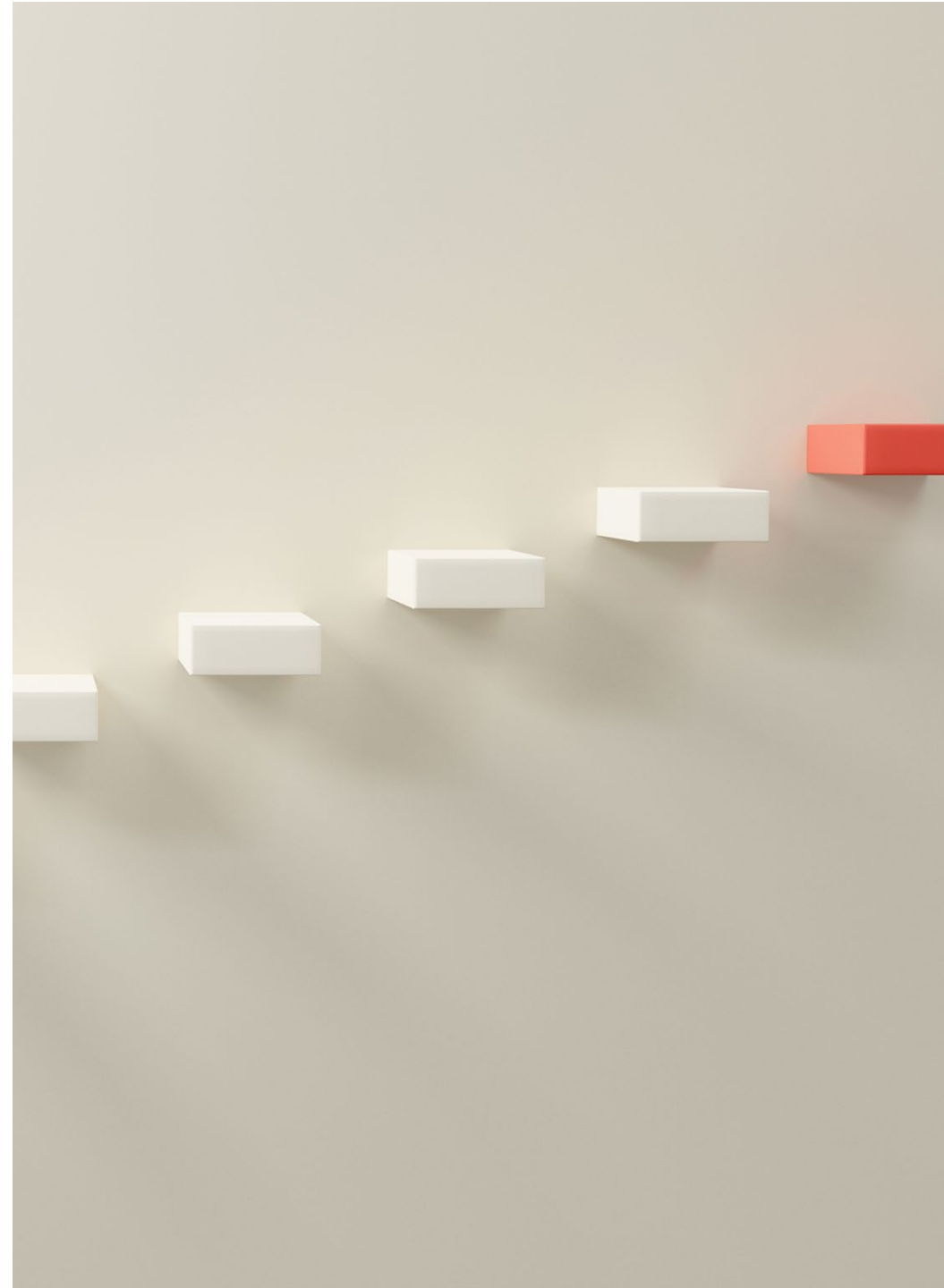
Clean-up efforts will take longer

Requires a coordinated response from Urban Forestry Staff will be deployed based on skill sets and needs



Next Steps

- Develop and review your plan
- Collaborate with local governments



“

Questions?