

Exercise Instructions

At your tables you have some scenarios and a risk matrix/heat map.

Work through the scenarios (approximately 7-10 mins per scenario) by plotting where you would assess the risk at 3 different stages of consideration:

- 1) At face value. As the risk is presented to you, where do you think this risk falls on the heat map?
- 2) Think of any control or risk mitigation methods you can implement and plot where the risk sits on the map with these considerations in mind.
- 3) Discuss the risk scenarios together. Based on your local government's goals, claims trends and priorities, where would you plot these risks on the heat map in relation to the others.

Scenario: Recreational Programming

A group approaches your local government with a proposal. They want to offer day camps for children over the summer at the recreation centre that will include:

- arts and crafts
- sports
- playing at the playground
- using the indoor swimming pool
- walks around the neighborhood
- a handful of field trips such as to the beach, zoo, aquarium and
- a couple overnights in the recreation centre.

They're excited about the idea and so are you, but then you really start to think

THREATS

Step 2: Assess

		IMPACT/SEVERITY		
		SLIGHT	MODERATE	SIGNIFICANT
FREQUENCY/ LIKELIHOOD	DEFINITE			
	MODERATE			
	SLIGHT			
	ALMOST NIL			

Step 1: Identify

1.

2.

3.

4.

5.

Step 3: Examine

1.

2.

3.

4.

5.

OPPORTUNITIES

Step 2: Assess

		IMPACT/EXPLOIT		
		SLIGHT	TEMPTING	DESIRABLE
FREQUENCY/ LIKELIHOOD	DEFINITE			
	MODERATE			
	SLIGHT			
	ALMOST NIL			

Step 1: Identify

1.

2.

3.

4.

5.

Step 3: Examine

1.

2.

3.

4.

5.

Consider Them All Together



Local governments face multiple risks from different areas. When you look more holistically and consider them altogether, would the risk rating change?

Outdoor Spaces



- Developed
- Active or Passive

Examples: plain green field, beach, playgrounds, bike or skateboard parks, fields and sports courts, multi-use pathways

- Undeveloped
- Not formally activated

Example: donated land that there is no plan for yet. The local government is not currently maintaining it and it is accessible at multiple points to the public by road, pathways, water etc.



Slips, Trips and Falls

Damaged surface area: shifting, heaving, deflections, cracks, spalling, etc.



Snow and ice



Protrusions, curling of carpet/landscape material etc.



Facility Rental/User Group

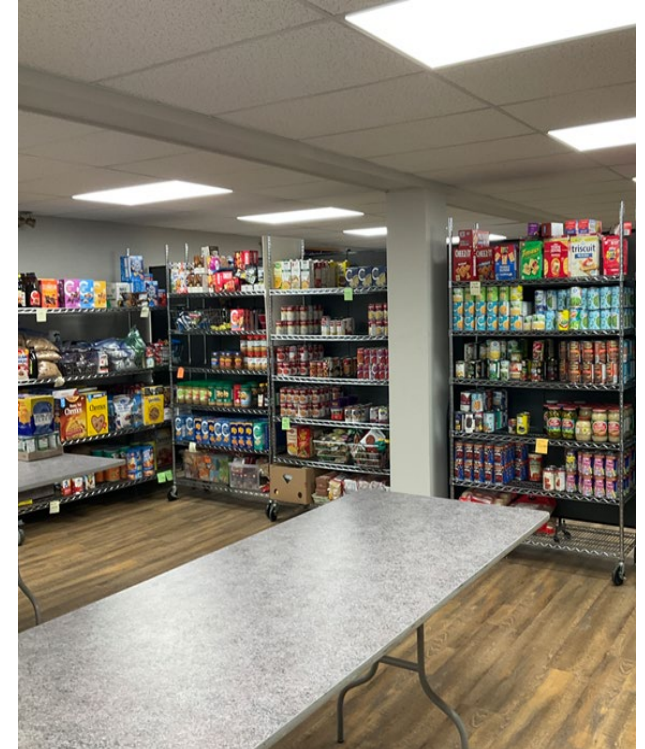
Daycare



Hockey



Soup Kitchen/Food Pantry



Community Event(s)

Outdoor Concert



Farmer's Market



Car Show



Easter Egg Hunt

